

MONTHLY MEMBERSHIP PROGRESS REPORT

LOCATION PENNSYLVANIA

District 14 H

Results as of: 6/30/2022

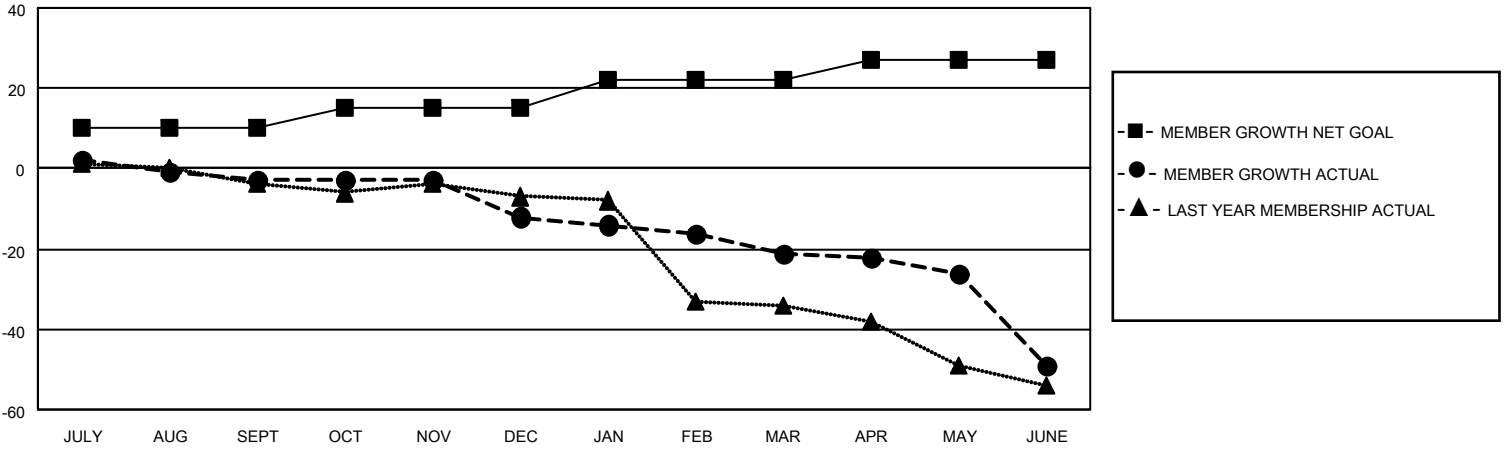
Clubs			
RESULTS FOR 2021-2022			
QUARTER	NEW CLUB GOAL	NEW CLUBS	DROPPED CLUBS
JULY/AUG/SEPT	1	0	0
OCT/NOV/DEC	1	0	0
JAN/FEB/MAR	1	0	0
APR/MAY/JUNE	1	0	1

Members			
RESULTS FOR 2021-2022			
QUARTER	MEMBER GROWTH NET GOAL	MEMBER GROWTH ACTUAL	DROPPED MEMBERS ACTUAL (including transfers)
JULY/AUG/SEPT	10	22	10
OCT/NOV/DEC	5	18	25
JAN/FEB/MAR	7	13	19
APR/MAY/JUNE	5	8	35

GOALS AND ACTUAL NEW CLUBS CUMULATIVE



GOALS AND ACTUAL MEMBERS CUMULATIVE



DROPPED CLUBS: 1

17 CLUBS OF 29 ADDED 1 OR MORE NEW MEMBERS

GENDER DISTRIBUTION

MALE	529 (73.27%)
FEMALE	193 (26.73%)
NON BINARY	0 (0.00%)
PREFER NOT TO ANSWER	0 (0.00%)

DROPPED MEMBERS

[CLICK HERE FOR CUMULATIVE MEMBERSHIP DATA](#)

DECEASED	19
CLUB CANCELLED	14
OTHER	56
TOTAL	89

TOTAL FAMILY UNIT MEMBERS 130

FAMILY MEMBERS PAYING HALF DUES 69